

QUATTROCONE MICROCONE



IMPLANT SYSTEMS

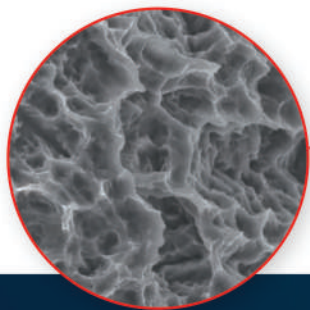
MEDENTIKA Catalog

The QUATTROCONE implant

Primary stability

Bone preserving

High precision conical connection between implant and abutment

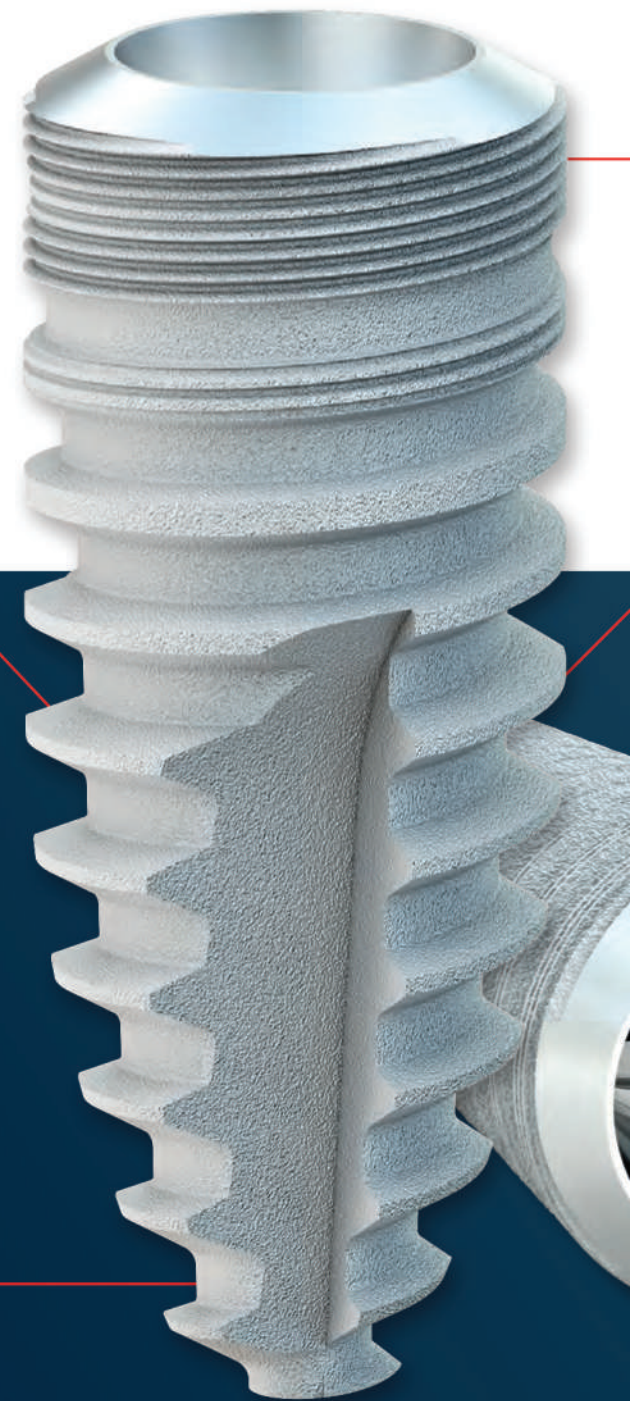


SURFACE

The highly pure, sand-blasted and acid-etched surface extends the entire length of the implant to the machined implant shoulder. It possesses macro-micro roughness that is ideally dimensioned for the deposition of bone-forming cells and thus enhances the ideal and above all reliable long-term osseointegration of the implant. It ensures well above average crestal bone formation in conjunction with the coronal microthread and the conical interface, throughout the implant shoulder to the interface.

FORM

The body of the QUATTROCONE implant is root shaped and, in combination with a high-profile thread and three cutting edges, ensures high primary stability, even in challenging situations. Perfect for immediate implant placement and immediate loading.





Surgery

QUATTROCONE implant

D 3.5 mm



- D 3.5
- Titanium Grade 4
- Sterile packaged
- Incl. closure screw

				
Length	9 mm	11 mm	13 mm	15 mm
Implant connection	RI	RI	RI	RI
Article No.	3-01-02	3-01-03	3-01-04	3-01-05

QUATTROCONE implant

D 3.8 mm

- D 3.8
- Titanium Grade 4
- Sterile packaged
- Incl. closure screw

					
Length	7 mm	9 mm	11 mm	13 mm	15 mm
Implant connection	RI	RI	RI	RI	RI
Article No.	3-01-16	3-01-17	3-01-18	3-01-19	3-01-20

QUATTROCONE implant

D 4.3 mm

- D 4.3
- Titanium Grade 4
- Sterile packaged
- Incl. closure screw

					
Length	7 mm	9 mm	11 mm	13 mm	15 mm
Implant connection	RI	RI	RI	RI	RI
Article No.	3-01-06	3-01-07	3-01-08	3-01-09	3-01-10

QUATTROCONE30 implant

D 4.3 mm

- angled
- D 4.3
- Titanium Grade 4
- Sterile packaged

				
Length	9 mm	11 mm	13 mm	15 mm
Implant connection	AI	AI	AI	AI
Article No.	4-01-01	4-01-02	4-01-03	4-01-04

QUATTROCONE implant

D 5.0 mm

- D 5.0
- Titanium Grade 4
- Sterile packaged
- Incl. closure screw

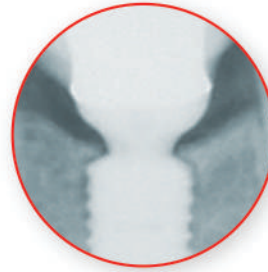
					
Length	7 mm	9 mm	11 mm	13 mm	15 mm
Implant connection	RI	RI	RI	RI	RI
Article No.	3-01-11	3-01-12	3-01-13	3-01-14	3-01-15

The MICROCONE implant

High precision conical implant abutment connections

EMERGENCE PROFILE

The natural forming of the prosthetic emergence profile is an additional building block to ensure aesthetically predictable results and achieves ideal long-term treatment successes in conjunction with all the other outstanding properties of the implant. It preserves the mucous membranes and takes account of the biological principles in the case of all indications. And not least it ensures ideal prosthetic handling.



SURFACE

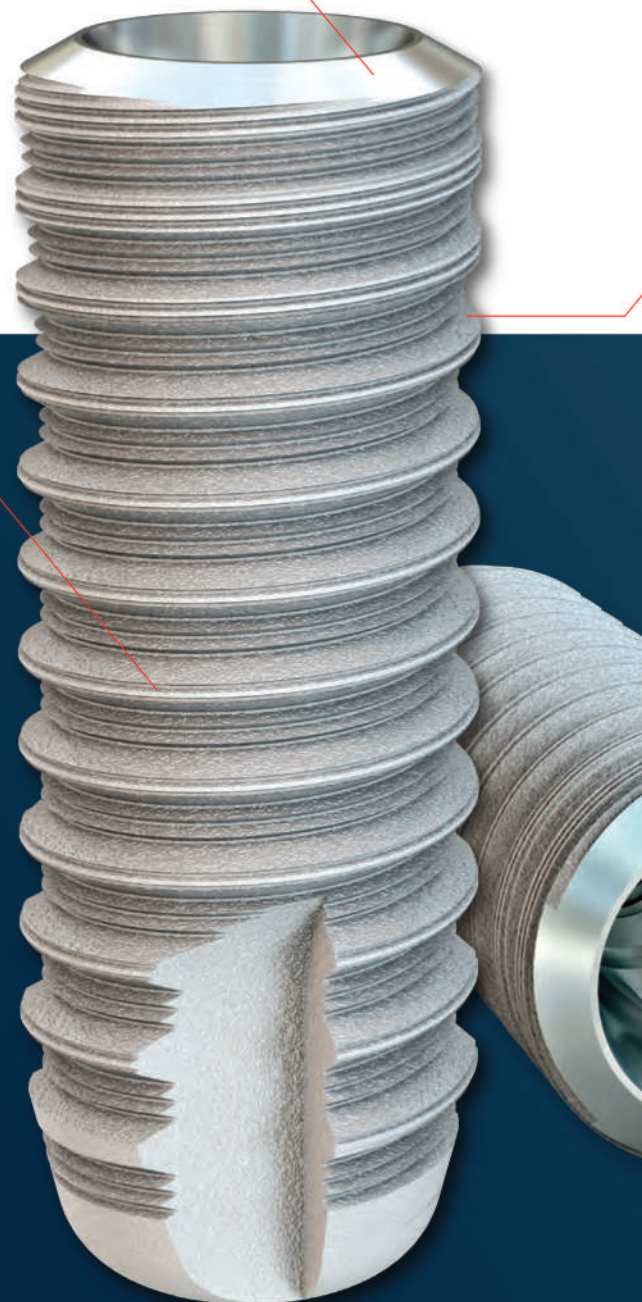
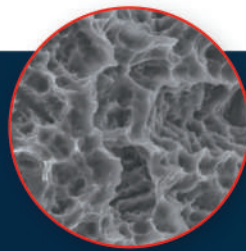
The high purity, sand-blasted and acid-etched surface extends the entire length of the implant to the implant shoulder. It possesses macro-micro roughness that is ideally dimensioned for the deposition of bone-forming cells and thus enhances the ideal and above all reliable long-term osseointegration of the MICROCONE.

It ensures well above average crestal bone formation in conjunction with the coronal microthread and the conical interface, throughout the implant shoulder to the interface.

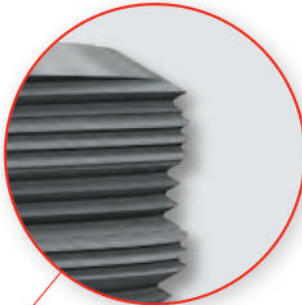
- Implant diameter from D 3.0 mm to D 5.0 mm
- Implant lengths from L 6.5 mm to L 15.0 mm

5 implant diameters and 6 implant lengths facilitate ideal dimensioning of the implants for each indication.

The implant diameter 3 mm (two part) enables insertion in narrow tooth gaps of the upper side and lower side and middle incisors.



MICRO-MACRO THREAD




The unique, highly complex, self-cutting micro-macro thread of the implant promotes the permanent apposition of bone cells and their retention in a really ideal manner not just in the crestal area, but across the entire implant surface. The continuous presence of the microthread on the macrothread sides and in the root of the thread generates the requirements for the largest possible contact surface with the bone. In the case of subcrestal insertion this results in an accumulation of the bone over the shoulder to the interface in conjunction with the conical tight joint. Together with the biologically ideally dimensioned micro-thread, the conical

joint ensures that the bone also stays permanently in position. This for its part results in the supporting of the soft tissue above it and thus permanent red and white aesthetics. The thread, designed to be inserted atraumatically and the drilling protocol reduce the risk of pressure necrosis.

Short insertion time thanks to a thread pitch of 0.8 mm per turn (macro thread).

IMPLANT CONNECTION



The high precision friction-locked and keyed interface achieves the best possible levels of stability between the abutment and the implant.*

1. One conical connection between the implant and the abutment in the case of implants with a diameter of 3.5 to 5.0 mm.
2. Conical connection between the implant and the abutment that is free of micromovements. As a result of this no mechanical irritations arise and the retention of the peri-implant bone is positively influenced.
3. The connection is virtually bacteria and liquid proof and can reduce the risk of infection. It supports the development of healthy tissue that is not irritable and prevents bone depletion.
4. Integrated system-linked platform switching shifts the transition between the implant and the abutment from the implant shoulder to a central position. This keeps bacterial stimuli away from the peri-implant tissue in conjunction with the tight conical connection and creates a broad horizontal basis for the stable apposition of hard and soft tissue.
5. The implant abutment connection meets all the system requirements for permanent red-white aesthetics in conjunction with a subcrestal implant position and the coronal microthread section.

*Mechanically tested according to ISO 14801 by the Fraunhofer IWM in Freiburg (Germany).

MICROCONE implant

D 3.0 mm

- D 3.0
- Titanium Grade 5 CF
- Sterile packaged
- Incl. closure screw



Length	11 mm	13 mm	15 mm
Implant connection	NI	NI	NI
Article No.	1-01-06	1-01-07	1-01-08

MICROCONE implant

D 3.5 mm

- D 3.5
- Titanium Grade 4
- Sterile packaged
- Incl. closure screw



Length	8 mm	9 mm	11 mm	13 mm	15 mm
Implant connection	RI	RI	RI	RI	RI
Article No.	2-01-30	2-01-31	2-01-32	2-01-33	2-01-34

MICROCONE implant

D 4.0 mm

- D 4.0
- Titanium Grade 4
- Sterile packaged
- Incl. closure screw



Length	6,5 mm	8 mm	9 mm	11 mm	13 mm	15 mm
Implant connection	RI	RI	RI	RI	RI	RI
Article No.	2-01-35	2-01-36	2-01-37	2-01-38	2-01-39	2-01-40

MICROCONE implant

D 4.5 mm

- D 4.5
- Titanium Grade 4
- Sterile packaged
- Incl. closure screw



Length	6,5 mm	8 mm	9 mm	11 mm	13 mm	15 mm
Implant connection	RI	RI	RI	RI	RI	RI
Article No.	2-01-41	2-01-42	2-01-43	2-01-44	2-01-45	2-01-46

MICROCONE implant

D 4.5/3.5 mm

- conical
- D 4.5/3.5
- Titanium Grade 4
- Sterile packaged
- Incl. closure screw



Length	6,5 mm	9 mm	11 mm	13 mm
Implant connection	RI	RI	RI	RI
Article No.	2-01-53	2-01-54	2-01-55	2-01-56

MICROCONE implant

D 5.0 mm

- D 5.0
- Titanium Grade 4
- Sterile packaged
- Incl. closure screw



Length	6,5 mm	8 mm	9 mm	11 mm	13 mm	15 mm
Implant connection	RI	RI	RI	RI	RI	RI
Article No.	2-01-47	2-01-48	2-01-49	2-01-50	2-01-51	2-01-52



Gingiva former

- D 3.0
- Titanium Grade 5 CF
- Sterile packaged



Implant connection	RI
Gingiva height	4.0 mm
Diameter	D 3.0
Article No.	2-03-14

Gingiva former

- D 4.0
- Titanium Grade 5 CF
- Sterile packaged



Implant connection	RI	RI	RI
Gingiva height	3.0 mm	4.0 mm	6.0 mm
Diameter	D 4.0	D 4.0	D 4.0
Article No.	2-03-18	2-03-19	2-03-20

Gingiva former

- D 4.5
- Titanium Grade 5 CF
- Sterile packaged



Implant connection	RI	RI	RI	RI	RI
Gingiva height	1.0 mm	2.0 mm	3.0 mm	4.0 mm	6.0 mm
Diameter	D 4.5	D 4.5	D 4.5	D 4.5	D 4.5
Article No.	2-03-02	2-03-03	2-03-15	2-03-04	2-03-05

Gingiva former

- D 5.5
- Titanium Grade 5 CF
- Sterile packaged



Implant connection	RI	RI	RI	RI	RI
Gingiva height	1.0 mm	2.0 mm	3.0 mm	4.0 mm	6.0 mm
Diameter	D 5.5	D 5.5	D 5.5	D 5.5	D 5.5
Article No.	2-03-06	2-03-07	2-03-16	2-03-08	2-03-09

Gingiva former

- D 6.5
- Titanium Grade 5 CF
- Sterile packaged



Implant connection	RI	RI	RI	RI	RI
Gingiva height	1.0 mm	2.0 mm	3.0 mm	4.0 mm	6.0 mm
Diameter	D 6.5	D 6.5	D 6.5	D 6.5	D 6.5
Article No.	2-03-10	2-03-11	2-03-17	2-03-12	2-03-13

Gingiva former

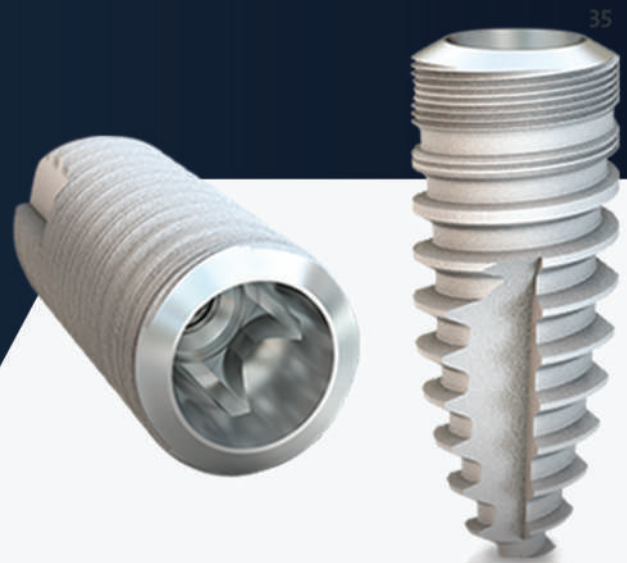
- D 3.5
- Titanium Grade 5 CF
- Sterile packaged



Implant connection	NI	NI	NI
Gingiva height	2.0 mm	4.0 mm	6.0 mm
Diameter	D 3.5	D 3.5	D 3.5
Article No.	1-03-01	1-03-02	1-03-03



QUATTROCONE



MICROCONE

Implant pick-up Open tray

- incl. retention screw
- Titanium Grade 5 CF



Implant connection	NI	RI	RI
Version	long	short	long
Article No.	1-04-01	2-04-01	2-04-02

Implant pick-up Closed tray

- incl. abutment screw
- incl. Positioning cap
- Titanium Grade 5 CF



Implant connection	NI	RI
Article No.	1-04-08	2-04-17

Custom implant pick-up Open tray

- incl. retention screw
- Titanium Grade 5 CF



Implant connection	RI	RI
Version	short	long
Article No.	2-04-07	2-04-08

Custom implant pick-up Closed tray

- incl. abutment screw
- incl. Positioning cap
- Titanium Grade 5 CF



Implant connection	RI
Article No.	2-04-18

Positioning caps for implant pick-up Closed tray

- POM



Implant connection	RI
Article No.	2-04-19

Laboratory implant

- Titanium Grade 5 CF



Implant connection	NI	NI	RI	RI
Type		CADCAM		CADCAM
Placement instrument				2-05-03
Article No.	1-05-01	1-05-02	2-05-01	2-05-02

Temporary abutment

- Titanium Grade 5 CF
- incl. abutment screw
- Recommended torque:
15 Ncm: NI
25 Ncm: RI



Implant connection	NI	RI
Placement instrument	Hex 1.26	Hex 1.26
Abutment screw	1-06-01	2-06-03
Laboratory screw	1-06-02	2-06-04
Article No.	1-17-04	2-17-07

Standard abutment straight

- Titanium Grade 5 CF
- incl. abutment screw
- Recommended torque: 15 Ncm



Implant connection	NI	NI	NI
Gingiva height	1.5 mm	3.0 mm	5.0 mm
Diameter	3.5 mm	3.5 mm	3.5 mm
Placement instrument	Hex 1.26	Hex 1.26	Hex 1.26
Abutment screw	1-06-01	1-06-01	1-06-01
Laboratory screw	1-06-02	1-06-02	1-06-02
Article No.	1-07-01	1-07-02	1-07-07

Standard abutment straight

- Titanium Grade 5 CF
- incl. abutment screw
- Recommended torque: 25 Ncm



Implant connection	RI
Gingiva height	0 mm
Diameter	3.5 mm
Placement instrument	Hex 1.26
Abutment screw	2-06-03
Laboratory screw	2-06-04
Article No.	2-07-20

Standard abutment straight

- Titanium Grade 5 CF
- incl. abutment screw
- Recommended torque: 25 Ncm



Implant connection	RI	RI	RI
Gingiva height	1.5 mm	1.5 mm	1.5 mm
Diameter	4.5 mm	5.5 mm	6.5 mm
Placement instrument	Hex 1.26	Hex 1.26	Hex 1.26
Abutment screw	2-06-03	2-06-03	2-06-03
Laboratory screw	2-06-04	2-06-04	2-06-04
Article No.	2-07-01	2-07-02	2-07-03

Temporary abutment straight

- Titan/PVDF
- incl. abutment screw
- Recommended torque: 25 Ncm



Implant connection	RI
Gingiva height	3.5 mm
Diameter	5.5 mm
Abutment screw	2-06-03
Laboratory screw	2-06-04
Article No.	2-17-08

Temporary abutment angled

- Titan/PVDF
- incl. abutment screw
- Type 1 = angled over flat
- Type 2 = angled over corner
- Recommended torque: 25 Ncm



Implant connection	RI
Gingiva height	3.5 mm
Diameter	5.5 mm
Abutment screw	2-06-03
Laboratory screw	2-06-04
Article No. Type 1	2-17-09
Article No. Type 2	2-17-10



IPS

IMPLANT SYSTEMS

Prosthetic Options Microcone/Quattrocone

Standard abutment straight

- Titanium Grade 5 CF
- incl. abutment screw
- Recommended torque: 25 Ncm



Implant connection	RI	RI	RI
Gingiva height	3.0 mm	3.0 mm	3.0 mm
Diameter	4.5 mm	5.5 mm	6.5 mm
Placement instrument	Hex 1.26	Hex 1.26	Hex 1.26
Abutment screw	2-06-03	2-06-03	2-06-03
Laboratory screw	2-06-04	2-06-04	2-06-04
Article No.	2-07-04	2-07-05	2-07-06

Standard abutment straight

- Titanium Grade 5 CF
- incl. abutment screw
- Recommended torque: 25 Ncm



Implant connection	RI	RI	RI
Gingiva height	5.0 mm	5.0 mm	5.0 mm
Diameter	4.5 mm	5.5 mm	6.5 mm
Placement instrument	Hex 1.26	Hex 1.26	Hex 1.26
Abutment screw	2-06-03	2-06-03	2-06-03
Laboratory screw	2-06-04	2-06-04	2-06-04
Article No.	2-07-23	2-07-24	2-07-25

Standard abutment angled 18°

- Titanium Grade 5 CF
- incl. abutment screw
- Type 1 = angled over flat
- Type 2 = angled over corner
- Recommended torque: 15 Ncm



Implant connection	NI	NI	NI
Gingiva height	1.5 mm	3.0 mm	5.0 mm
Diameter	3.5 mm	3.5 mm	3.5 mm
Placement instrument	Hex 1.26	Hex 1.26	Hex 1.26
Abutment screw	1-06-01	1-06-01	1-06-01
Laboratory screw	1-06-02	1-06-02	1-06-02
Article No. Type 1	1-07-03	1-07-04	1-07-08
Article No. Type 2	1-07-05	1-07-06	1-07-09

Standard abutment angled 18°

- Titanium Grade 5 CF
- incl. abutment screw
- Type 1 = angled over flat
- Type 2 = angled over corner
- Recommended torque: 25 Ncm



	RI	RI	RI
Implant connection	RI	RI	RI
Gingiva height	1.5 mm	1.5 mm	1.5 mm
Diameter	4.5 mm	5.5 mm	6.5 mm
Placement instrument	Hex 1.26	Hex 1.26	Hex 1.26
Abutment screw	2-06-03	2-06-03	2-06-03
Laboratory screw	2-06-04	2-06-04	2-06-04
Article No. Type 1	2-07-07	2-07-08	2-07-09
Article No. Type 2	2-07-13	2-07-14	2-07-15

Standard abutment angled 18°

- Titanium Grade 5 CF
- incl. abutment screw
- Type 1 = angled over flat
- Type 2 = angled over corner
- Recommended torque: 25 Ncm



	RI	RI	RI
Implant connection	RI	RI	RI
Gingiva height	3.0 mm	3.0 mm	3.0 mm
Diameter	4.5 mm	5.5 mm	6.5 mm
Placement instrument	Hex 1.26	Hex 1.26	Hex 1.26
Abutment screw	2-06-03	2-06-03	2-06-03
Laboratory screw	2-06-04	2-06-04	2-06-04
Article No. Type 1	2-07-10	2-07-11	2-07-12
Article No. Type 2	2-07-16	2-07-17	2-07-18

Standard abutment angled 18°

- Titanium Grade 5 CF
- incl. abutment screw
- Type 1 = angled over flat
- Type 2 = angled over corner
- Recommended torque: 25 Ncm



	RI	RI	RI
Implant connection	RI	RI	RI
Gingiva height	5.0 mm	5.0 mm	5.0 mm
Diameter	4.5 mm	5.5 mm	6.5 mm
Placement instrument	Hex 1.26	Hex 1.26	Hex 1.26
Abutment screw	2-06-03	2-06-03	2-06-03
Laboratory screw	2-06-04	2-06-04	2-06-04
Article No. Type 1	2-07-26	2-07-27	2-07-28
Article No. Type 2	2-07-29	2-07-30	2-07-31

Multi-unit abutment angled 17°

- Titanium Grade 5 CF
- Sterile packaged
- incl. abutment screw
- Type 1 = angled over flat
- Type 2 = angled over corner
- Recommended torque: 25 Ncm



Implant connection	RI	RI	RI
Gingiva height (mm)	1.1/2.5	2.1/3.5	4.1/5.5
Placement instrument	Hex 1.26	Hex 1.26	Hex 1.26
Abutment screw	2-06-02	2-06-02	2-06-02
Article No. Type 1	2-31-04	2-31-05	2-31-06
Article No. Type 2	2-31-10	2-31-11	2-31-12



Multi-unit abutment angled 30°

- Titanium Grade 5 CF
- Sterile packaged
- incl. abutment screw
- Type 1 = angled over flat
- Type 2 = angled over corner
- Recommended torque: 25 Ncm



Implant connection	RI	RI	RI
Gingiva height (mm)	0.6/3.0	1.6/4.0	3.1/5.5
Placement instrument	Hex 1.26	Hex 1.26	Hex 1.26
Abutment screw	2-06-02	2-06-02	2-06-02
Article No. Type 1	2-31-07	2-31-08	2-31-09
Article No. Type 2	2-31-13	2-31-14	2-31-15

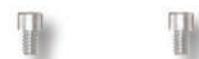


Multi-unit bridge screw

- Material: Titan Grade 5 KV
- Recommended torque: 15 Ncm

NEW

Placement instrument	Hex 1.26	Kugel Torx
Article No.	0-31-02	6-31-01



Multi-unit prosthetic components

- Recommended torque: 15 Ncm
- titanium base / titanium cap: incl. bridge screw
- Material: Titanium grade 5 KV
- modelling sleeve: without Bridge screw
- Material: Tecanat (PC)

Description	titanium base	titanium base ASC	titanium cap Flex	modelling sleeve
Placement instrument	Hex 1.26	Kugel Torx	Hex 1.26	
Screw	0-31-02	6-31-01	0-31-02	
Article No.	0-31-09	6-31-02	0-31-20	0-31-11

Please note: The Multi-unit modelling sleeve can be used with the Multi-unit titanium base and Multi-unit titanium cap.

NEW

NEW



Multi-unit abutment straight

- Titanium Grade 5 CF
- Sterile packaged
- Recommended torque: 25 Ncm



Implant connection	RI	RI	RI	RI
Gingiva height	1.5 mm	2.5 mm	3.5 mm	5.5 mm
Placement instrument	0-13-76	0-13-76	0-13-76	0-13-76
Article No.	2-31-01	2-31-16	2-31-02	2-31-03

Multi-unit prosthetic components

- incl. bridge screw
- Recommended torque: 15 Ncm
- Material gold cap, castable: "(AU 60%; Pd 20%; Pt 19%; Ir 1%)"
- Material CoCr cap: CrCo alloy / CTE 14.1



Description	gold cap, castable	CoCr cap
Placement instrument	Hex 1.26	Hex 1.26
Screw	0-31-02	0-31-02
Article No.	0-31-07	0-31-08



Novaloc® Processing package

- Matrix housing, titanium/PEEK
- Retention insert white
Retention force: light
- Retention insert yellow
Retention force: medium
- Retention insert green
Retention force: strong
- Mounting collar, silicone
- 2 pcs per package
- incl. mounting insert



Material	Titanium	Peek
matrix housing		
Article No.	2010.601	2010.611

Please note: The entire product overview is available in section Novaloc.

Placement instrument MedentiLOC abutment, angled

- Stainless steel
- Ball Hex



Version	Manual and ratchet	Contra-angle
Article No.	0-13-38	0-13-39

MedentiLOC Laboratory implant

- Stainless steel



Version	straight	angled
Article No.	0-21-01	0-21-02

Novaloc abutment straight

- Titanium Grade 5 CF
- ADLC coated
- Recommended torque: 25 Ncm



Implant connection	RI	RI	RI	RI	RI
Gingiva height	1.0 mm	2.0 mm	3.0 mm	4.0 mm	5.0 mm
Placement instrument	Hex 1.26	Hex 1.26	Hex 1.26	Hex 1.26	Hex 1.26
Article No.	2-23-01	2-23-02	2-23-03	2-23-04	2-23-05

Novaloc abutment angled 15°

- Titanium Grade 5 CF
- ADLC coated
- incl. abutment screw
- Type 1 = angled over flat
- Type 2 = angled over corner
- Recommended torque: 25 Ncm



Implant connection	RI	RI	RI	RI	RI
Gingiva height (mm)	1.0/2.0	2.0/3.0	3.0/4.0	4.0/5.0	5.0/6.0
Placement instrument	Kugel Torx	Kugel Torx	Kugel Torx	Kugel Torx	Kugel Torx
Abutment screw	2-06-05	2-06-05	2-06-05	2-06-05	2-06-05
Article No. Type 1	2-23-06	2-23-07	2-23-08	2-23-09	2-23-10
Article No. Type 2	2-23-11	2-23-12	2-23-13	2-23-14	2-23-15

Please note: To screw in the angled Novaloc abutments you need the special Placement instrument Ball-Torx 0-13-60 or 0-13-59.

Implant removal



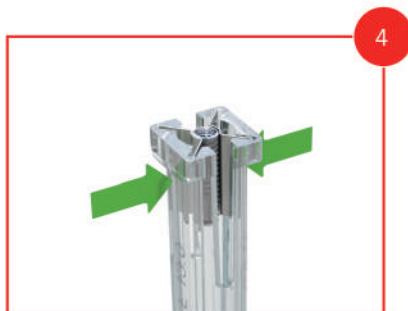
Take the blister out of the outer packaging.



Remove the Tyvek film from the blister pack to expose the container with the implant.
(Caution: This removes the sterile barrier.)



Hold the container upright and push the lid down.



Secure the implant by slightly pressing on the sides of the container.



Turn the placement instrument clockwise slowly while inserting it into the implant until it slides into the square of the implant.



A "soft-click" signals that the implant is securely fixed in the placement instrument.
Please note:
No pressure needs to be applied!



Before removing the implant, release the side pressure on the container.



You can now safely remove the implant.



Insert the implant into the prepared implant bed.



The supplied closure screw is screwed into the underside of the container.



Use the HEX 1.26 placement instrument to remove the closure screw.



Turn the closure screw hand tight (5-10 Ncm) into the implant.

Implant bed preparation

Example for MICROCONE D 4.5 x 11.0

Incision phase



The incision phase serves to form a mucosa flap to reveal the implantation point as bone.

The incision phase is case-dependent and must be considered based on the patient's individual requirements depending on the healing mode (submerged or open healing).

First marker drill with the needle drill Ø 1.6 mm



The marking bore is inserted following the mobilization of the mucoperiosteal flap with the needle drill and can also alternatively be performed with the aid of a drilling template.

Pilot drill hole with the pilot drill Ø 2.0 mm



The pilot hole is drilled with the Ø 2.0 mm pilot drill. This defines the sagittal direction of the implant axis and the drilling depth (observe depth marking).

A template-based implantation is recommended for the definitive alignment and to prevent deviations from the implant planning.

During the drilling, it is essential to ensure sufficient cooling, e.g. NaCl liquid, to avoid overheating and thus damage to the bone.

Reamer with the standard drill Ø 3.0 mm and Ø 3.5 mm



In this case, reaming is initially carried out with the standard drill bit Ø 3.0 mm and then with the standard drill bit Ø 3.5 mm.

The laser markings that correspond to the respective implant length serve to inspect the depths for their part.

Subsequent reaming with the Ø 4.0 mm standard drill

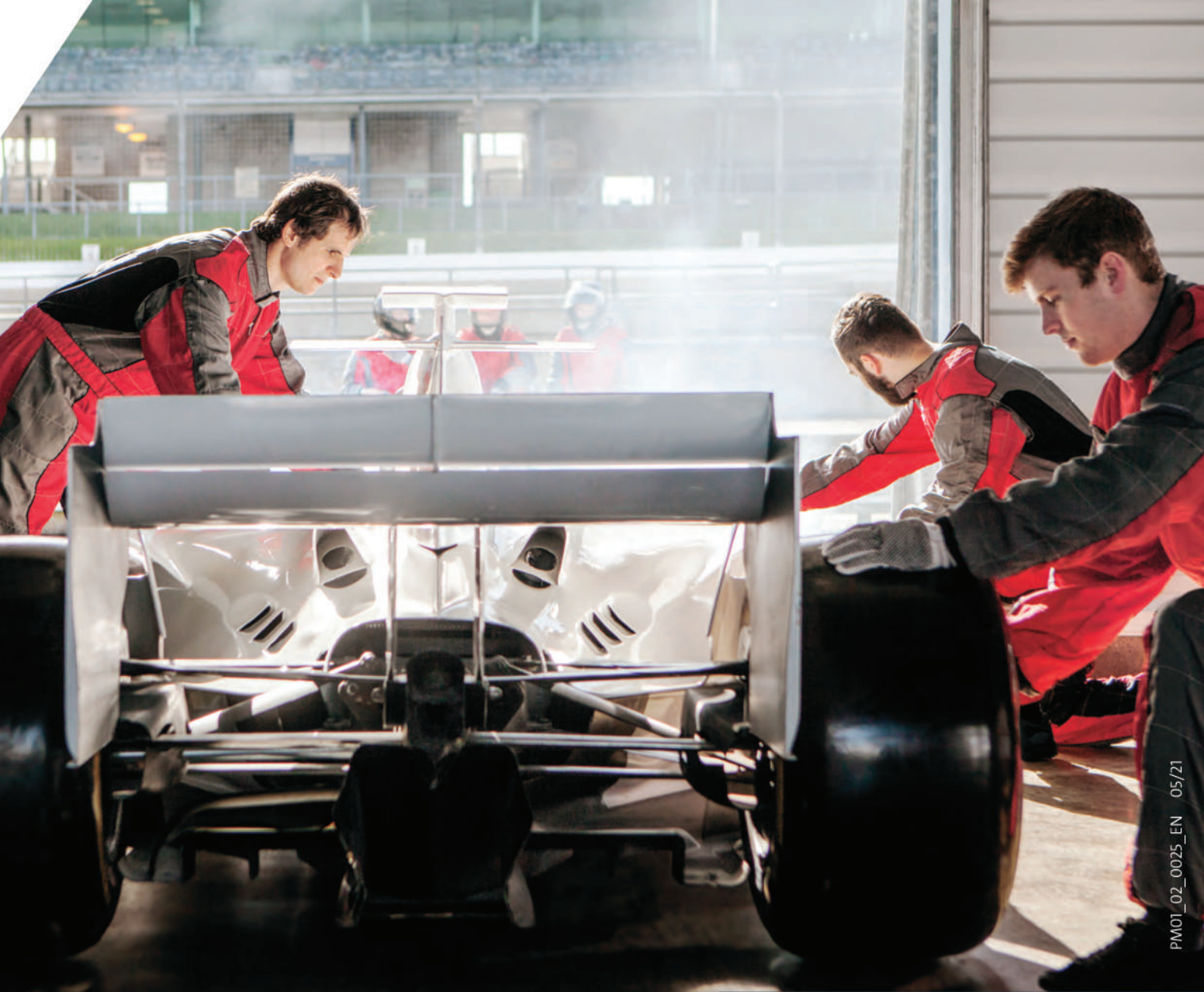


The final enlargement drilling is completed using the standard drill bit Ø 4.0 mm.

Enlargement drilling with the cortical drill Ø 4.0/4.3 mm



It is recommended in the event of an extremely compact cortex and an average spongiosa or D1/D2 bone quality in the lower jaw, using additionally the cortical drill with 4.0/4.3 mm diameter.



PM01_02_0025_EN 05/21

» Passion for Precision «



Həsən Əliyev 82 F, AZ1110 Baku, Azerbaijan
Email: info@adentta.az
Tel: 055 409 98 78

adentta

 **MEDENTIKA**[®]
A Straumann Group Brand